



---

## LUXAFLEX® ROLLER BLIND PROJECT XXL

A high qualitative and durable roller blinds system, developed to fit very large windows. The blinds are made to measured and available in two different models. Coupled blinds can be made, with up to three blinds on one operation. Great fabric collection to choose from; screen for view through and heat regulation, opaque qualities for privacy and black out/dim out qualities that blocks light.



# TECHNICAL INFORMATION

Models	2
Max width	4500 mm
Max height	4600 mm
Max surface	16 sqm

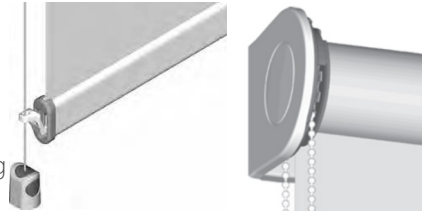
All measures are depending on what fabric is chosen.

## General

Extruded strong aluminium tubes in two different dimensions; 50 or 62 mm. Fabric is attached with spline, which gives possibility to change fabric.

## Mounting

Both models are possible to mount on wall or in ceiling. Bracket model is also possible to mount at the side. Both models can be made with wire guiding that helps the blind to stay at place.



## Finishing options of the blind



Welded channel with covered bottom weight (standard)

Finishing Oval 124



Finishing Stadium 600



Finishing Oval 124 XL



## Operation

- Chain: white, black or grey operation. Plastic chain is standard, steel is optional.
- Crank: in steel, fixed or detachable. Length 1800 mm as standard or special length up to 4300 mm.
- 230V AC Motor and PowerView®: integrated in the tube, suitable with different control systems like radio, KNX, IB or wired solutions.



Chain operation

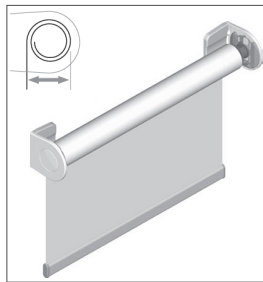


Crank operation

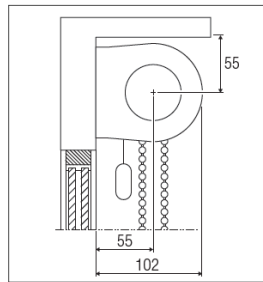


## Models/Sketches

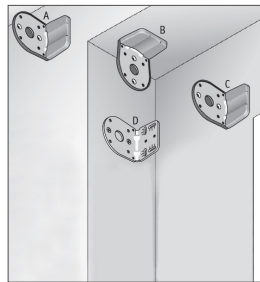
**XXL-210 Bracket**, classic roller blind with coloured steel brackets on the side, plastic cover endcaps. ○



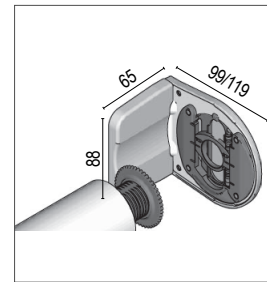
RAL-code for metal parts: white 9016



Note: the roll and operation will build outside the measures

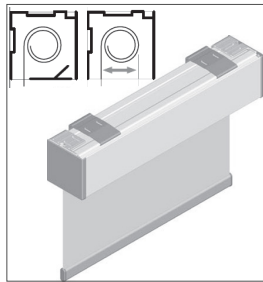


A: on face wall mount, B: ceiling mount, C: on the frame, D: in recess, side mount

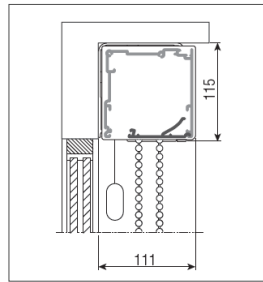


Bracket 55/75 mm distance. Note: the roll can build outside the measures

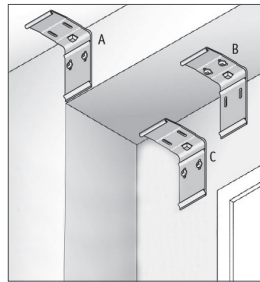
**XXL-270/290 Cassette open or closed**, for protection of the fabric roll and nicer look. ○



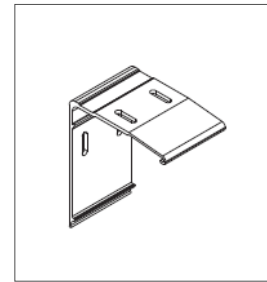
Open 290/Closed 270  
RAL-code for metal parts: white 9016



Cassette dimension incl. brackets



A: on face wall mount, B: ceiling mount, C: on the frame



Bracket

---

# GLARE & REFLECTION CONTROL

## Fabrics

Multiple fabrics with different functions and designs for every room.

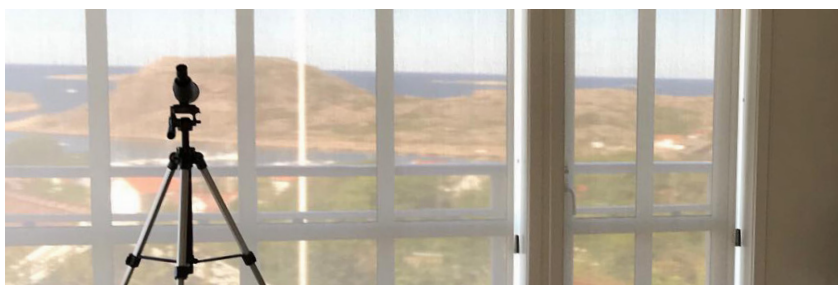
- Room darkening, for rooms that is in need of light block.
- Opaque fabrics, for privacy and sun protection.
- Screen fabric, for nice view through, heat regulation and to prevent glare.

Examples:

**Verosol EnviroScreen**, 2% openness factor. Screen fabric with aluminium back side that reflects 74% of solar energy. Environmentally certified.

**Verosol SilverScreen**, 2%, 3% or 4% openness factor. Screen fabric with aluminium back side that reflects up to 85% of solar energy.

See collection book or [Luxaflexproject.se](http://Luxaflexproject.se) for more information and technical specification.



Verosol SilverScreen

---

# CONTACT US

## Showrooms in Sweden

Our two showrooms are located in Stockholm and Gothenburg. Please see below the contact persons for each location.

### Etage 1 Stockholm

Rosenlundsgatan 40  
[www.etage1.se](http://www.etage1.se)

Contact: Calle Kihlman  
+46 (0)739-44 14 67  
[calle.kihlman@luxaflex.se](mailto:calle.kihlman@luxaflex.se)

### Studio L6 Göteborg

Lasarettsgatan 6  
[www.studiol6.se](http://www.studiol6.se)

Contact: Pernilla Norberg  
+46 (0)708-16 62 91  
[pernilla.norberg@luxaflex.se](mailto:pernilla.norberg@luxaflex.se)

Our customer service in each country are more than happy to help you with any product question:

### Sweden

Phone: +46 (0)371-895 00  
E-mail: [projektoffert@luxaflex.se](mailto:projektoffert@luxaflex.se)  
[www.luxaflexproject.se](http://www.luxaflexproject.se)

### Denmark

Phone: +45 86 17 93 77  
E-mail: [projekt@luxaflex.dk](mailto:projekt@luxaflex.dk)  
[www.luxaflexproject.dk](http://www.luxaflexproject.dk)

### Norway

Phone: +47 23 17 33 00  
E-mail: [prosjekt@luxaflex.no](mailto:prosjekt@luxaflex.no)  
[www.luxaflexproject.no](http://www.luxaflexproject.no)

